



TESTED
& AUDITED
ACCORDING TO ISAE 3000

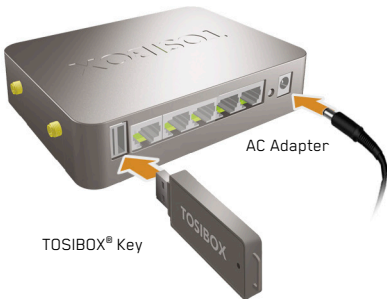
TOSIBOX®

Lock 100 Quick Start Guide v2.9

Copyright © Tosibox Oy, 2017

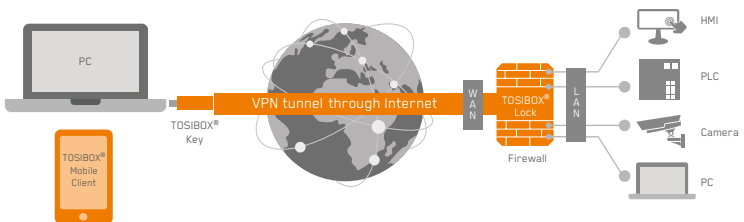
1 Matching the Lock with the Key

TOSIBOX® Lock



1. Connect the AC adapter to the Lock and wait for 2 minutes.
2. Insert the Key into the USB port of the Lock. When the LED on the Key stops blinking, (after approx. 10 seconds) the matching is complete and you can remove the Key from the USB port.
3. Go to **2a** if deploying into broadband networks (ethernet) or **2b** if deploying into mobile networks.

2a Deploying into Broadband Networks



Internet /xDSL router

1. Connect an Internet-connected ethernet cable to the Lock's WAN port.
2. Plug the devices into the Lock's LAN ports (LAN 1-3 or connect wirelessly via WLAN). If the devices have static IP addresses, please see *Deploying the Lock* in the TOSIBOX® user manual.

2b Deploying into Mobile Networks



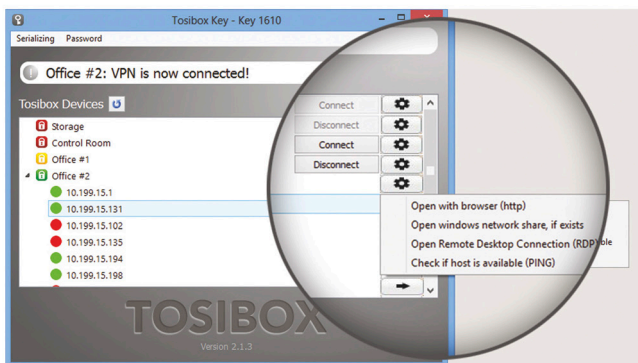
USB modem

1. Connect a computer to the Lock's service port with an ethernet cable
2. Type `http://172.17.17.17` into your browser's address field to access the Lock's user interface. Log in using "admin" account. The password can be found on the bottom of the Lock. Select *Network* → *USB modem* and either use the Automatic APN setting or fill in the APN according to your mobile operator settings. Enter PIN code if necessary. Click *Save*.
3. Plug a supported USB modem into the USB port of the Lock.
4. Plug network devices into the Lock's LAN ports (LAN 1-3) or connect wirelessly via WLAN. See *Deploying the Lock* in the user manual for static IP configurations.
5. Verify on the status page of the Lock user interface that Internet connection is OK.

For more information and latest supported modem models visit: www.tosibox.com/support




3 Using the Key

- A) Insert a TOSIBOX® Key into the USB port of your computer to install the Key software.



The TOSIBOX® Key user interface illustrated above shows all Lock devices serialized to the Key and the network devices connected to them.

For more options click  or  icon.

-  The Lock is connected to the Internet and the Key is connected to the Lock.
-  The Lock is connected to the Internet, but the Key isn't connected to the Lock.
-  The Lock is not connected to the Internet.

Declarations of Conformity

This product is CE marked and compliant with the Directive 2014/53/EU. The relevant Declaration of Conformity is available at: www.tosibox.com/product/lock-100/EU-DoC.



TOSIBOX® Mobile Client

Federal Communication Commission Interference Statement

This device complies with FCC part 15 of the FCC rules. Operation is subject to the following two conditions: (1) This device may not cause harmful interference, and (2) this device must accept any interference received, including interference that may cause undesired operation.

FCC Caution: Any changes or modifications not expressly approved by the party responsible for compliance could void the user's authority to operate this equipment.

FCC ID: 2AHCNLOCK100

In Oulu, 02-May-2017

Tosibox Oy

Tero Lepistö, CEO



US Patents US8831020.
Patents pending US14/119753,
US14/370872, US14/390153



www.tosibox.com/support/



Download TOSIBOX® user manual

www.tosibox.com/manual.pdf